

**PROM
WAD**
ELECTRONICS
DESIGN

PROMWAD COMPANY OVERVIEW



About Promwad

Our Services

Company in persons

Our domains

Our values

Locations overview

We offer

Contact Us

Promwad is a group of high-tech companies that provide outsourced electronics and software development services, from prototypes to mass production.

Our history started in **2004**. Promwad by numbers today:

19 **years** we've been helping our customers to create new devices and software.

250+ **clients**, all over the world, including global brands.

3m+ **devices** have manufactured by our clients.

100+ **employees**: engineers, industrial designers and managers.

intel

 **LATTICE**
SEMICONDUCTOR

RENESAS

 REALTEK

 **TEXAS**
INSTRUMENTS

NXP

JTAG
TECHNOLOGIES

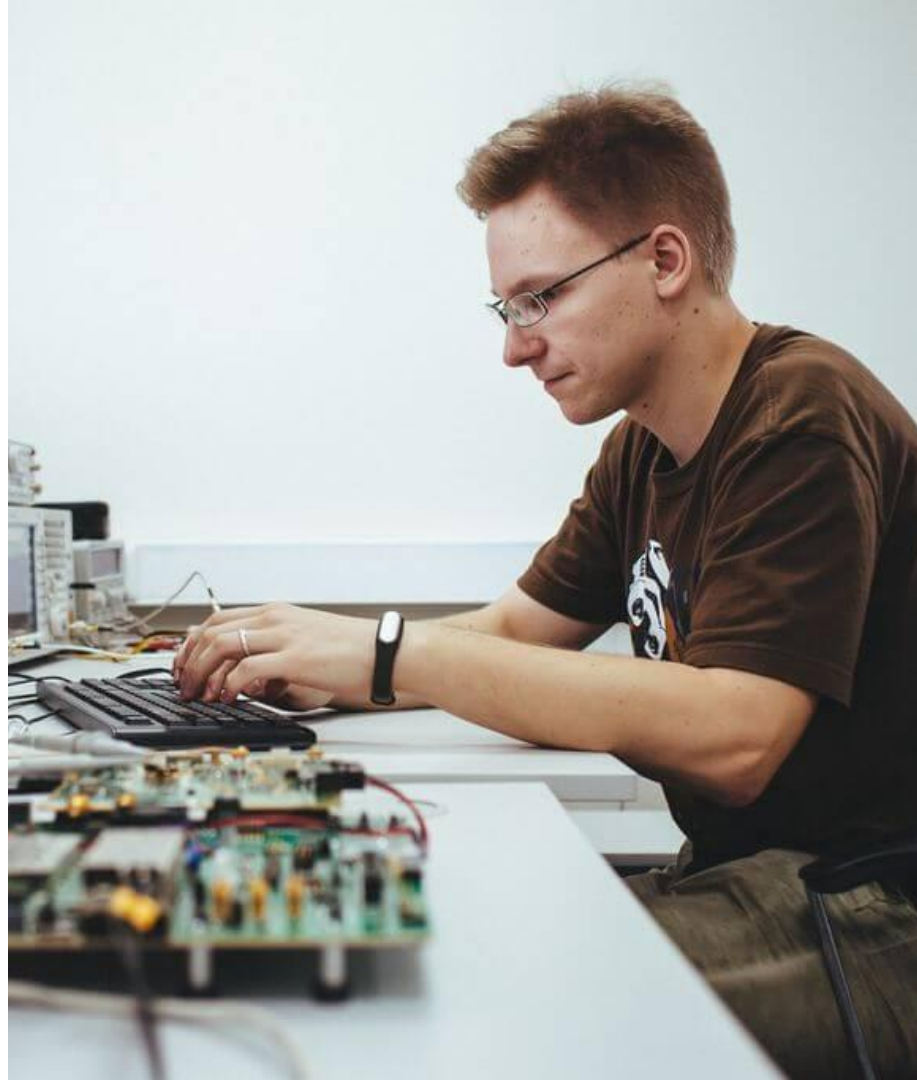
 MICROCHIP

AMD 
XILINX

 **ANALOG**
DEVICES

OUR SERVICES

- **Hardware Design & Development:**
Electronic System Design & Architecture;
PCB Design & Layout.
- **Industrial Design and Manufacturing:**
Custom Enclosure Design;
Manufacturing;
Production Launch;
White Labeling.
- **Custom Software Development:**
Business Analysis;
UX/UI Design;
Web Development;
Mobile App Development;
Desktop App Development;
QA.
- **IoT Development:**
Industrial IoT;
Consumer IoT.



OUR COMPANY IN PERSONS



Darya G.



Alexander K.



Alexander V.

Roman Pakholkov (Vilnius, Lithuania) – founder and CEO of Promwad, founder and mentor of the Bridgio hardware accelerator, and leader of the Hardware Ecosystem community.

Darya Gora (Nis, Serbia) – head of HR, site manager.

Alexander Kraynov (Daugavpils, Latvia) – head of the Hardware/Embedded Engineering department at Promwad.

Alexander Vorobjev (Essen, Germany) – head of Sales Office in DACH-region.

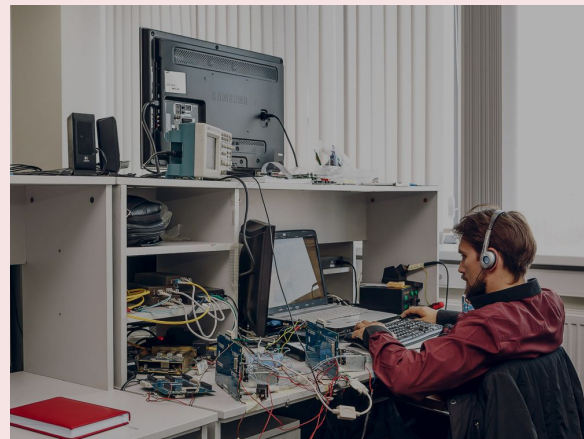


Roman P.

OUR TEAM

& social responsibility

The Promwad team works and travels together.



100+ people in our company:

- hardware engineers,
- microcontroller and MPU software engineers,
- QA engineers,
- project managers,
- industrial designers
- mechanical designers,
- sales managers, etc.

OUR DOMAINS

 **PROMWAD** ELECTRONICS DESIGN

We strive for client's success in the following high-tech markets:

Automotive

Automotive electronics & SW, ADAS, IVI systems, dash cams, and tracking solutions.



Telecom

Network switches, routers, media converters, access point devices, thin clients, etc.



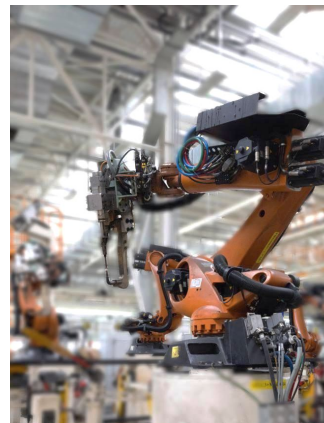
Video Streaming

Online video & media streaming solutions and set-top boxes, smart TV apps.



Industrial Automation

Solutions for the IND automation systems, robotics, instrumentation and control for Industry 4.0.



IoT & Consumer Gadgets

Fitness bracelets, headphones, portable chargers, access control devices, etc.



AUTOMOTIVE

We help our customers create electronic devices and embedded systems for cars, trucks, sea, and river vessels.

- Custom dashboard cameras
- Interfaces based on Embedded Linux, QT
- Software for dashboards and sensor networks
- In-vehicle Infotainment systems
- Diagnostic and test tools
- Software compatible with AUTOSAR, MISRA, ASPICE
- Image and video processing systems: face recognition & analysis

[More info](#)



Hardware

ARM, ARC, MIPS

Standards

AUTOSAR, ISO 26262, A-SPICE, E-GAS

Telematics

GNSS, GSM, RF, Wi-Fi, Bluetooth.

Interfaces

CAN, LIN, Ethernet, MIPI, USB 3.0, LVDS, PCI-E, etc.

Vendors

Qualcomm, Intel, NXP, Infineon, Texas Instruments, STMicroelectronics, Analog Devices

TELECOM

We create telecom equipment & software for it in compliance with the highest requirements for bandwidth and QoS.

- Next-gen LAN / WAN / Wi-Fi routers
- Stackable & managed access switches
- Network security appliances
- Aggregation switches & routers
- Other access point devices

[More info](#)



Interfaces

Wi-Fi, ZigBee, Ethernet, Fast Ethernet, Gigabit Ethernet, Bluetooth, IEEE802.11a/b/g/n, SFP, DECT, ADSL, SHDSL, RapidIO, CAN.

Technologies

- Fast-Path network processing
- Hardware-accelerated NAT, QoS, Forwarding
- Linux DSA — Distributed Switch Architecture
- VoIP and Telephony SLIC interfacing, DECT
- Ethernet packet processing
- Remote management

Accelerated workflows for DSP & communication systems

- MATLAB & Simulink, toolboxes
- VHDL/Verilog code generation

VIDEO STREAMING

Our goal is to create trendy and high-quality products with unique design and powerful software in streaming & TV domains

Our services:

- Business analysis
- UI/UX design
- Smart TV & Mobile apps
- Web Backend / frontend
- Embedded SW

Our solutions:

- White-label IPTV / OTT service
- Co-watching / Video conferencing
- HTTP live streaming player
- CWMP client

[More info](#)



Languages

C, C++, Java, Kotlin, Swift, Dart, JavaScript, TypeScript, HTML5, CSS3, WebAssembly, Bash, Python

SW platforms:

Android TV, Tizen, WebOS, Roku OS
AOSP, Buildroot, Yocto
AMLogic SDK, Broadcom Nexus SDK,
Linux kernel, U-Boot bootloader,
SecureOS

Frameworks

Node.js, React, Angular, React Native, Flutter, Qt

INDUSTRIAL AUTOMATION

We design custom hardware and develop software for industrial automation and robotics vendors and companies.

- Industrial drives & motor control
- Programmable controllers (PLC/PAC/IPC/DAQ)
- Human-machine interface (HMI) and SCADA: supervisory control and data acquisition
- Industrial sensors & measurement systems
- Power supplies, converters & energy management systems

[More info](#)



Tools & Languages

C, C++, Python, Rust, Qt, JavaScript, Verilog, VHDL, HLS, LLVM

Platforms

ARM, RISC-V, MIPS, FPGA/CPLD

Industrial Interfaces

IEC 60870-5-101/104, IEC 61850, EtherCAT, PROFINET, POWERLINK, EtherNet/IP, Modbus TCP, OPC UA, MQTT, HSR/PRP, HART, IO-Link, PROFIBUS, Modbus RTU, CANopen, RS232, RS485, SNMP, IEC 62056 (DLMS/COSEM)

OS

Baremetal, Linux (+RT), ROS, RTOS: FreeRTOS, ChibiOS/RT, eCos, CMSIS-RTX, RTEMS, Segger embOS, Mbed OS, TI-RTOS

HMI/SCADA/Web SCADA/ Dashboard Dev

Microcontrollers: TouchGFX, EmWin, uGFX, Ivgl | Linux: Qt (QML, Widgets), JavaScript, C++, Rust, WebAssembly

INTERNET OF THINGS

We design reliable high-end IoT solutions according to modern industry standards. Promwad engineers are ready to solve your project goals in IoT at any stage.

- End devices
- Gateways & hubs
- Android & iOS mobile apps
- UI/UX development
- Medtech devices
- Smart home appliances

[More info.](#)



Interfaces

Bluetooth, Wi-Fi, LoRa, NB-IoT, Sigfox, ZigBee, Z-Wave

Platforms

Azure, AWS, Bosch IoT

Protocols

HTTP/HTTPS, MQTT, AMQP, Modbus, Profibus, Profinet, Powerlink, ONVIF

OS

Baremetal, QNX, FreeRTOS, Linux, Android, Tizen, WebOS

Languages

C, C++, Java, Kotlin, Swift, Python, JavaScript

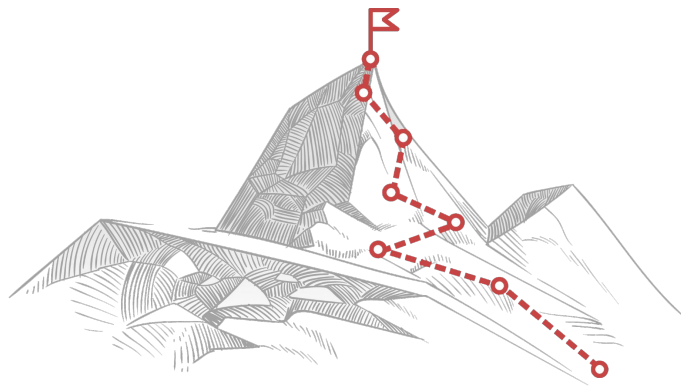
RE-CERTIFICATION ISO9001

2022
PLANS

 **PROMWAD** ELECTRONICS DESIGN

2022 We pay great attention to the quality of our internal processes to pass re-certifications, meet the requirements of our customers and current market trends.

- Q1** Adaptation and optimisation of internal processes.
- Q2** Updating the documents according to ISO9000 with an external audit.
- Q3** Internal training for the QA team, according to the ISO9001 requirements, updating documents, undergoing an audit.
- Q4** Getting ready for the A-Spice processes (CL2 level). Adapting to ISO9001.





OUR VALUES

- **Customer focus:** we help our clients to take their business to a new orbit with the latest technologies and grow with them.
- **Professionalism:** global brands choose us because of the high qualification of Promwad engineers. We appreciate it and are constantly developing our knowledge and skills.
- **Proactive and responsible attitude:** we don't stand aside from important events in the industry and the world, support social projects, and value our reputation.
- **Efficient teamwork:** we assemble cross-functional teams of engineers and managers to work efficiently on each project: in the right location and with the necessary staff members.
- **Results-driven:** we choose the best technologies to suit the client's business objectives and plan the work within the defined budget and deadlines.

OUR VECTOR: INTEGRATION WITH THE EU

A hand holding a pen points to a bar chart on a document. In the background, a map of Europe is visible, with several countries highlighted in orange, corresponding to the bars in the chart.

- 2004 – a team of electronics enthusiasts founded Promwad. They aim to develop professionally at the cutting edge of technology and integration into European and global business.
- 2007 – first projects for foreign companies: we made a series of industrial products for Switzerland and a multimedia player for Canada.
- 2014 – we decided to move our business portfolio to Europe
- 2016 – we opened an office in Lithuania. Promwad is now headquartered in the Vilnius Technology Park.
- 2020 – we opened a development office in Daugavpils, Latvia and a sales office in Essen, Germany.
- 2022 – we are preparing to the official launch of our engineering in Nis, Serbia.

- Vestel
- Lynx
- Emcomo
- B1

- Aduk
- Waystream
- Timesys
- Jabil

A group of people are sitting around a table in a meeting room, engaged in a discussion. The text 'CUSTOMERS FROM EUROPE AND THE USA' is overlaid on the image.

CUSTOMERS FROM EUROPE AND THE USA

GEOGRAPHICAL STRATEGY

 **PROMWAD** ELECTRONICS DESIGN

Regional strategy

- growth of our European part;
- development of new offices and their infrastructure;
- hiring new employees in new locations (or in Belarus & Russia with relocation).

Integration

- with European communities, universities, laboratories;
- with industrial standards, certificates and licenses.



Head office

Vilnius, Lithuania.



Development centres

Daugavpils, Latvia;
Nis, Serbia.



Sales office

Essen, Germany.

Our target for 2023: to reach more than 50% of headcount in European offices.

An aerial photograph of a city skyline under a cloudy sky. In the foreground, a river flows from the left, crossed by a modern bridge. The city is filled with various buildings, including several tall, modern glass skyscrapers in the background. A red dot is placed on the skyline, marking a specific location. The text 'Locations overview' is overlaid on the image, with the red dot acting as a bullet point.

Locations overview

HEAD OFFICE Vilnius, Lithuania

In 2016, we opened our headquarters in Vilnius. This city is a centre of attraction for engineers, startups, and technology companies. Google, Uber, Revolut, and other major international companies have offices here.

Vilnius Tech Park is the biggest ICT startup hub in the Baltics and Nordics. The city ranks first in digital quality of life. The local business ecosystem facilitates the integration of new professionals, startups, and young companies.

The city is comfortable to live in: there is a well-developed network of public transport, a large number of parks and bike paths. From Vilnius, you can travel not only within the Baltic States but also to other EU countries on the top-rated low-cost airlines.

To live and work in Vilnius, a knowledge of English will be sufficient. If you are planning to move here with your family, you can choose from a variety of kindergartens and schools with different languages of education, including Belarusian and Russian.



DEVELOPMENT CENTRES

Daugavpils, Latvia



We opened our development centre in Daugavpils in 2020.

This city is one of the business centres in Latvia, with production facilities for Axon Cable, SMD Baltic, Yukon, and Regula Baltija. There are 9 large universities here: Daugavpils University, a branch of Riga Technical University, a branch of the Baltic International Academy, and others.

The city is very green: there are many parks, surrounding forests, lakes and rivers with comfortable beaches and areas for recreation.

Daugavpils is convenient for walks and car trips; it is compact, and there are almost no traffic jams. There is a well-developed system of public transportation: buses and streetcars.

It is a multicultural city with many national communities. Almost all residents of the town speak Russian or English.

In schools, the curriculum is taught in Latvian. Some educational institutions have programs for national minorities in Belarusian, Polish, Ukrainian, and Russian languages. However, to receive a high school diploma, it is necessary to pass an exam in the state language.

DEVELOPMENT CENTRES

Nis, Serbia

In 2022, we opened our engineering centre in Nis, which is recognized as the centre of the electronic and mechanical industry in Serbia.

The city has a science and technology park with 35 companies, including big companies like Qualis, IMI, and Veriest.

In Nis, as in the whole country, Serbian is the main language of communication, also many people know English, at least at the basic level (it has been taught here since the first grade).

Universities in Serbia are members of the Bologna system.

The area around Nis is perfect for hiking, and in general, Serbia is an exciting country for travelling: there are a lot of mountains, sights, spa resorts, and national parks.



OUR CLIENTS' REFERENCES

 **PROMWAD** ELECTRONICS DESIGN



O Y P E R

Kiryl Sidarchuk
CEO at Oyper Inc. (USA)

"Oyper and Promwad integrated a shoppable video solution with IPTV; it was one of the first such projects in the world. Our joint team included 16 specialists: 10 from their side and 6 from ours. Being experts in video streaming solutions, Oyper and Promwad had a great high-level & successful collaboration!

We wanted to find a strategic partner with a high reputation and great professionalism, and Promwad was a perfect match".



VESTEL

Mustafa Kamer Peker
Senior SW Project Manager
at Vestel (Turkey)

"We had a very tight schedule and were facing some technical challenges. We have 200 engineers working on SW projects composing different project groups but, from time to time, we're not able to deliver on time and we need additional technical support, so we work with Promwad.

So far, their deliverables are of good quality, which we can tell from the tests and our customer feedback. They're a very competent team. Their engineering service quality is at a good level".



ALPINE

Sergey Priporov
Director IVI at Alpine
Electronics (USA)

"Promwad has strong capabilities to deliver project assets against agreed Milestones in time and especially for projects where shipment date cannot be changed.

Their technical competence in Android AOSP was impressive.

Promwad Technical Manager / PM provided overall project status and deliverable in time via Scrum process set up".

You can see more Promwad Client Reviews on Clutch

Clutch

4.9 ★★★★★ 8 REVIEWS >

WE OFFER:

 **PROMWAD** ELECTRONICS DESIGN



Close-knit
team



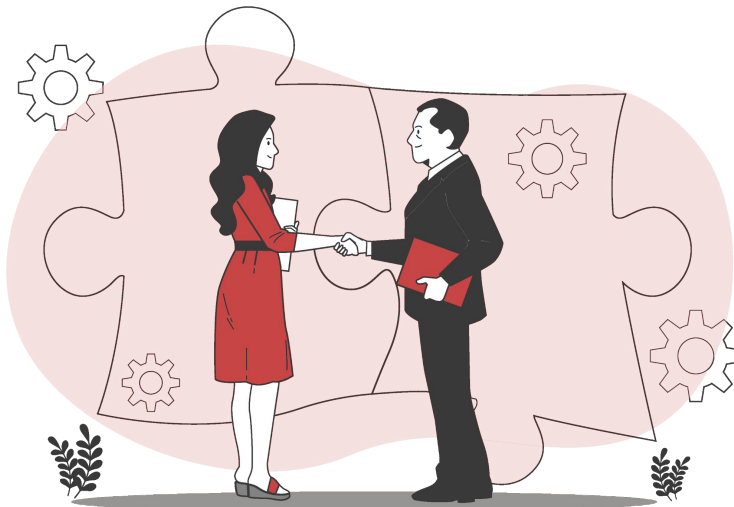
Free English
classes



Latest
equipment



Seminars, training,
education



Competitive
salary



Relocation
assistance



Remote
work



5 sick
days



CONTACT US



Darya Gora

Head of HR



Darya Gora



Darya.Gora@promwad.com

Head Office

Antakalnio g. 17, LT-10312,
Vilnius, Lithuania

+370 5 214 1244

Development Center

18. Novembra iela 37A, LV-5401,
Daugavpils, Latvia

Sales Office

Meisenburgstr. 39, 45133,
Essen, Germany

+49 201 487 90 148
+49 175 292 3032

More information about us on
www.promwad.com